

PART OF N. 1/2 OF SECTION 22, T.6 N., R.1 W., S.L.B. & M.
ROLLING HILLS ADDITION NO. 6

139

LOTS 1-5 & 18-23

TAXING UNIT: 25

IN OGDEN CITY

PREFIX: 13-139

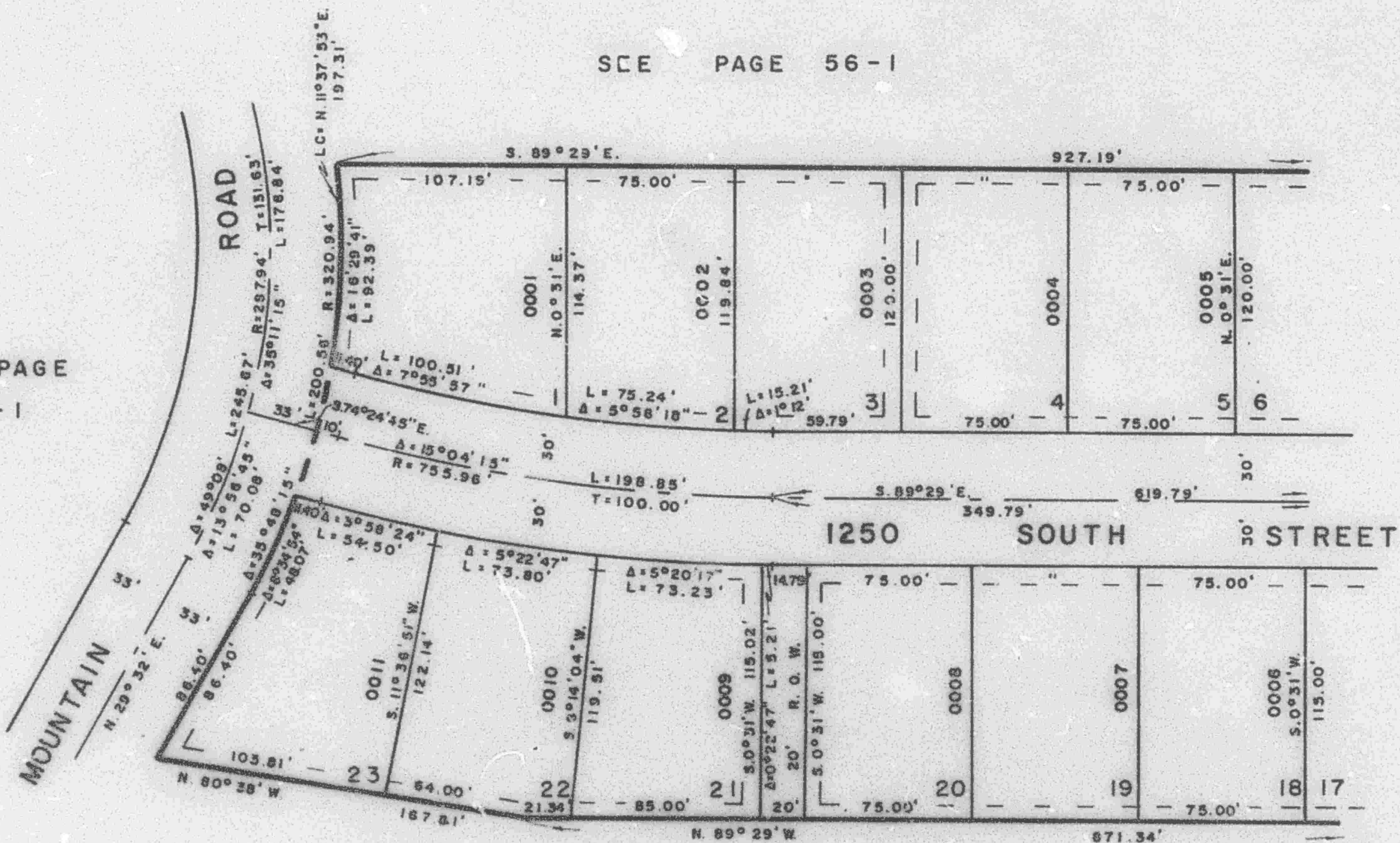
SCALE 1"=50'

EXCEPT WHERE OTHERWISE SHOWN
 ALL LOTS ARE OWNED BY:
 CURTIS T. HISLOP, ET AL

SEE PAGE 56-1

SEE PAGE
 56-1

SEE PAGE
 140



FOR COMPLETE ENG. DATA
 SEE ORIG. DED. PLAT IN
 BOOK 17, PAGE 57

7' UTILITY & DRAINAGE ESMTS.
 EACH SIDE OF PROPERTY LINE
 AS INDICATED BY DASHED LINES